

Newlands School



# NEWLANDS NEWS

3rd May 2024

Week 3 Summer 1

## MESSAGE FROM FARZANA



This week in school, our staff team have been looking at equality and diversity. At Newlands, we celebrate the range of needs of our children and the variety of approaches we take whether that is for sensory processing needs, limited verbal communication or with challenges around social interaction – it really is a huge privilege to work in a diverse way and we enjoy supporting our children to achieve the very best! We value and respect the range of backgrounds and needs of all of our children as together our families make up the big Newlands family! We are all here to support each other.

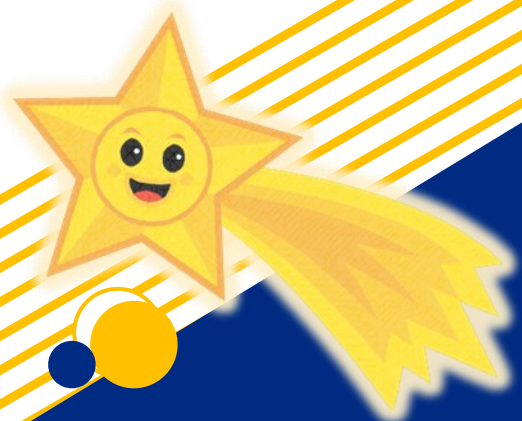
For this week's parent carer coffee afternoon, the theme was speech therapy and Sandra, our school based speech therapist was able to join us for this. Sandra is in school 1 day a week every Thursday. She works in school across all areas by supporting our class teams to deliver speech and language strategies for maximum reach. Most of our speech therapy is delivered in this way by class teams to ensure that the children work on this consistently. Some children are on the NHS speech therapy caseload and the NHS speech therapists then come into school as needed.

If you are able to attend our coffee afternoons, everyone is most welcome to join us as we love to see parents and carers in school. If not, please don't hesitate to contact your class team for anything as needed via Class Dojo – we are here to help.

Kind regards from Farzana

## THIS WEEKS SUPERSTAR AWARDS

- \* Kenzie - Yellow
- \* Freddie—Yellow



Attendance Matters



Every Day Counts....

This week's attendance is: 94.80%

Our topic this half  
term is:

EYFS & KS1—  
Native Animals

KS2—In the Jungle

# OUR LEARNING

White Class have been learning about different jungle animals and their habitats in Science. This week we learnt about the Red Howler Monkey, they are very loud and like to swing from the trees in the jungle. White Class made brown and green playdough and used their fine motor skills to roll and pinch to create some jungle trees.



Website:  
[www.newlands.rochdale.sch.uk](http://www.newlands.rochdale.sch.uk)



Contact:  
0161 655 0220



Email:  
[office@newlands.rochdale.sch.uk](mailto:office@newlands.rochdale.sch.uk)





# OUR LEARNING

This week, Pink Class visited Skylight Circus. We had a fantastic time exploring the circus equipment! We particularly enjoyed the circus aerial swing, we faced our fears and we all had a go. We played parachute games and learnt hand held skills. We then played tactile games using a variety of sensory equipment. We hope that we are invited again!



Website:  
[www.newlands.rochdale.sch.uk](http://www.newlands.rochdale.sch.uk)



Contact:  
0161 655 0220

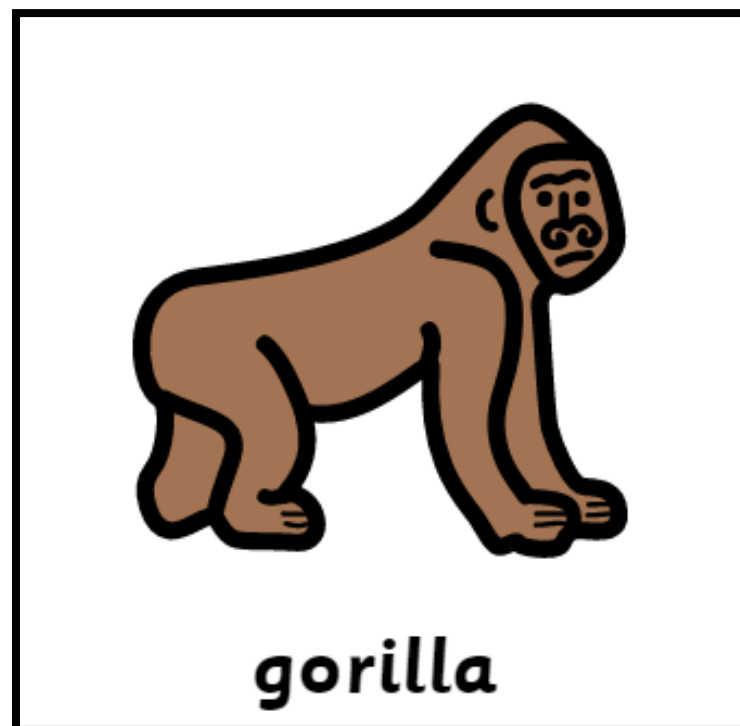
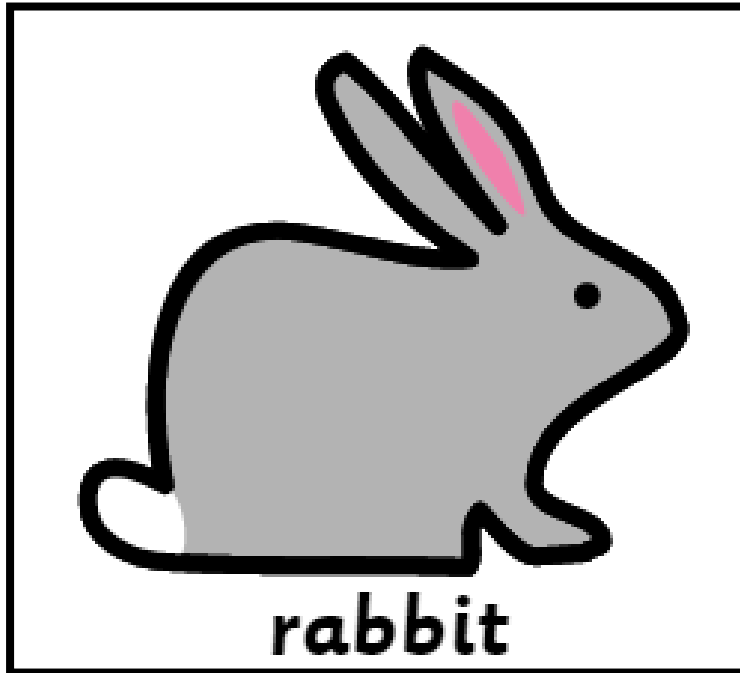


Email:  
[office@newlands.rochdale.sch.uk](mailto:office@newlands.rochdale.sch.uk)

Don't forget to  
check the school  
website for videos  
of how to sign  
our Sign of the  
Week!

# SIGN OF THE WEEK

*This week we have been using these symbols and learning the signs*



Website:  
[www.newlands.rochdale.sch.uk](http://www.newlands.rochdale.sch.uk)



Contact:  
0161 655 0220



Email:  
[office@newlands.rochdale.sch.uk](mailto:office@newlands.rochdale.sch.uk)



# CHILD & FAMILY SUPPORT



## RAISING ROCHDALE

Rochdale Child & Educational Psychology Service Advice Line for Parents/Carers

Wednesday Afternoons 1-4pm

01706 926400

Do you as a parent or carer at home have concerns about your child and feel that you need someone to talk to?

Rochdale Child & Educational Psychology Service is providing a telephone helpline for any parent or carer of a child or young person between the ages of 0-25, who feel they would benefit from a discussion with a psychologist to support them with any concerns arising.

The concerns can be related to education or family life and might include:

- **Stress and Anxiety** which may be impacting on your child's ability to feel able to attend school
- **Low self-esteem**
- **Conflict and relationship** difficulties within the family
- Difficulties/anxieties related to **learning and/or exams**
- Concerns about **friendships, bullying and social isolation**
- How to best **look after yourself** so you can support your children

Your child does not already need to be open to the Child & Educational Psychology Service for advice to be provided.

Please ring our business support team on 01706 926400 anytime on a **Wednesday afternoon between 1 and 4.30pm** and ask to speak to an Educational Psychologist.

*(If the phone lines are busy, please leave a message and a member of the team will get back to you.)*

## JOIN THE Super 1s



**All disabilities welcome  
Ages 12-25**

CHALLENGE YOURSELF  
BE MORE ACTIVE  
IMPROVE YOUR SKILLS  
MAKE NEW FRIENDS

**Free inclusive  
cricket sessions!**

**WHEN:**  
Thursdays 6pm - 7pm

**WHERE:**  
Oulder Hill Leisure Complex,  
Hudson's Walk,  
Rochdale OL11 5EF

**CONTACT TO BOOK  
YOUR PLACE:**  
Amlyn Layton  
alayton@lancashirecricket.co.uk

[www.lordstaverners.org/super1s](http://www.lordstaverners.org/super1s)



**LORD'S TAVERNERS**  
Empowering young people through cricket

Registered Charity No. 306054 / OSCR No. SC046238



**Lancashire  
Cricket**  
Established 1864

## GOING THROUGH A STORM OR JUST BEEN THROUGH ONE?

**ANDYSMANCLUB**  
are talking  
groups for men to  
**HELP YOU** through  
those storms.



**#ITSOKAYTALK**

**ANDYSMANCLUB  
ROCHDALE**

**MAYFIELD**  
Mayfield Sports Centre,  
Keswick Street,  
Castleton, Rochdale,  
OL11 3AG

**SPOTLAND**  
Crown Oil Arena,  
Willbutts Ln,  
Rochdale OL11 5DS

ANDYSMANCLUB LTD is a  
Registered Charity in England  
and Wales (1179647) Scotland  
(SC054185) and a Company  
Limited by Guarantee, registered  
in England and Wales (11118153)

**FIND OUT  
MORE** [info@andysmanclub.co.uk](mailto:info@andysmanclub.co.uk)  
[www.andysmanclub.co.uk](http://www.andysmanclub.co.uk)

Website:  
[www.newlands.rochdale.sch.uk](http://www.newlands.rochdale.sch.uk)



Contact:  
0161 655 0220



Email:  
[office@newlands.rochdale.sch.uk](mailto:office@newlands.rochdale.sch.uk)



# IMPORTANT NOTICES

## Communication with school

We welcome an open and transparent relationship with our parents/carers. If you have any questions or concerns, please contact school directly to discuss. Please note that social media is not an appropriate way to express concerns about school as we have no method to respond and discuss/address any issues you may have.

School phone number: 0161 655 0220

School email: [office@newlands.rochdale.sch.uk](mailto:office@newlands.rochdale.sch.uk)

Class dojo message to your child's teacher

## Reminders

- We are a non-smoking site. Can we please remind all our parents and carers that smoking or vaping is not permitted on site, even in your own vehicles. Thank you
- Our entrance door closes at 9.00am prompt for pupil arrivals. This is to maintain safety for all our pupils travelling around school, and to ensure good staffing levels in classes. Pupils arriving after this time will need to go via the main office entrance, and will be marked in as late. Please do make every effort to arrive before this time, giving consideration to your journey time.

## Dates for your diary

- Monday 6th May—Bank Holiday. School will be closed to pupils on this day.
- Wednesday 15th May—Green, White, Black, Red, Orange & Yellow classes sports day—more information to follow
- Wednesday 22nd May—Blue, Indigo, Violet, Bronze, Silver, Gold & Pink classes sports day—more information to follow



Website:  
[www.newlands.rochdale.sch.uk](http://www.newlands.rochdale.sch.uk)



Contact:  
0161 655 0220



Email:  
[office@newlands.rochdale.sch.uk](mailto:office@newlands.rochdale.sch.uk)